



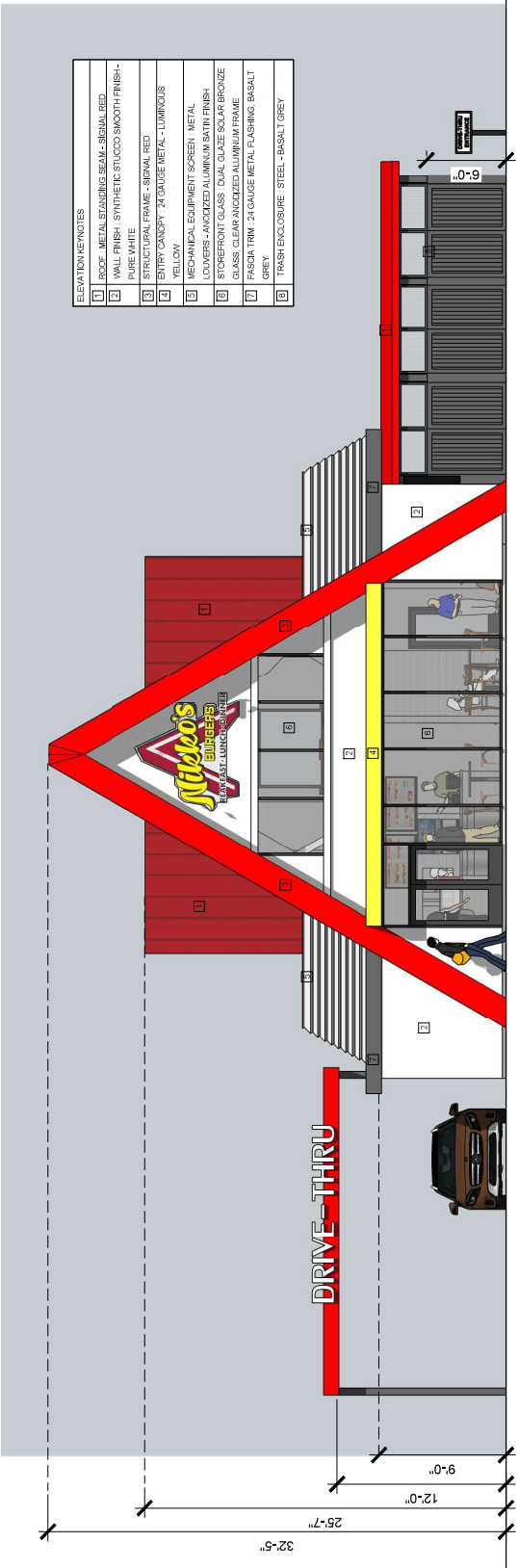
300 E. STYVE ST. SUITE 100, REDLANDS, CA 92373  
 PHONE: (909) 557-1258  
 WWW.MCNAUGHTON.AA  
**MCNAUGHTON ARCHITECTURE, INC.**

Owner: NIKKO'S BURGERS - TONY'S LLC  
 PO BOX 7763, REDLANDS, CA 92373  
 TONYSS2019@YAHOO.COM

Job Title: NIKKO'S BURGERS  
 Exterior Elevations  
 Sheet Title: NIKKO'S BURGERS

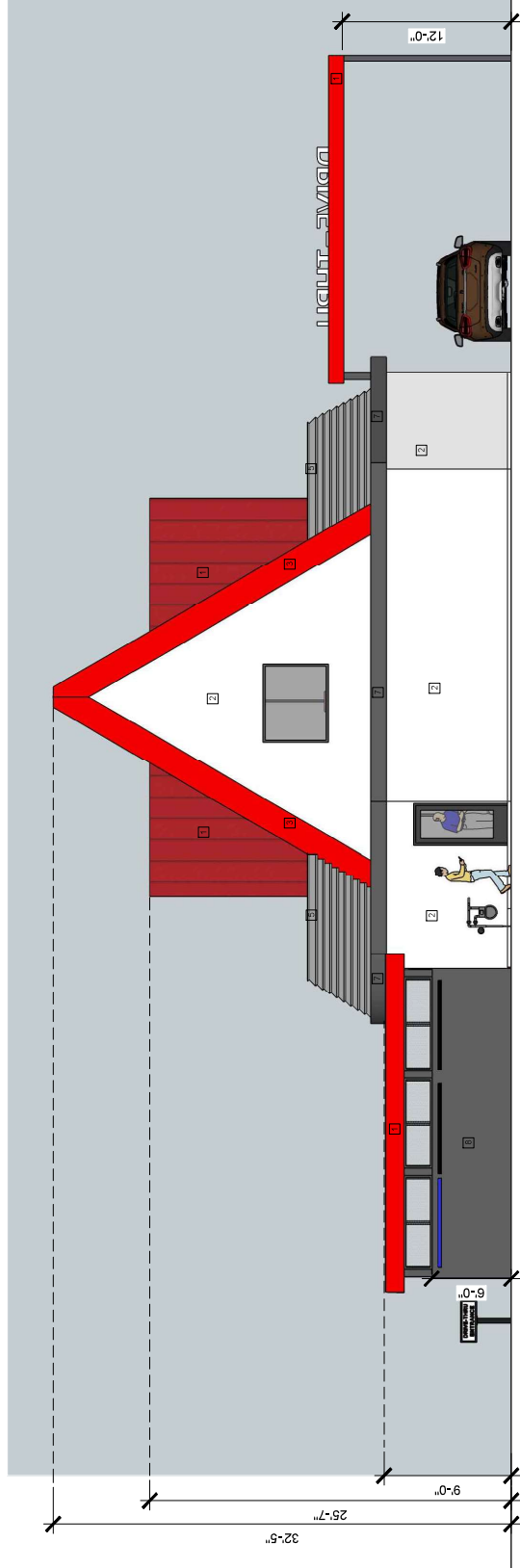
Revisions:  
 Scale: 1/4" = 1'-0"  
 Date: 03/24/21  
 Drawn By: Thurston Lockwood, AIA  
 Checked By: Thurston Lockwood, AIA  
 Project Number: 201903010001, AA  
 Sheet Number

**A-3.0**



2 | SOUTH ELEVATION

SCALE: 1/4" = 1'-0"



1 | NORTH ELEVATION

SCALE: 1/4" = 1'-0"



SHAW MCNAUGHTON, AIA  
 300 E. STATE ST. - SUITE 300, REDLANDS, CA 92373  
 PHONE: (951) 517-7324  
 WWW.SHAWMCNAUGHTON.COM

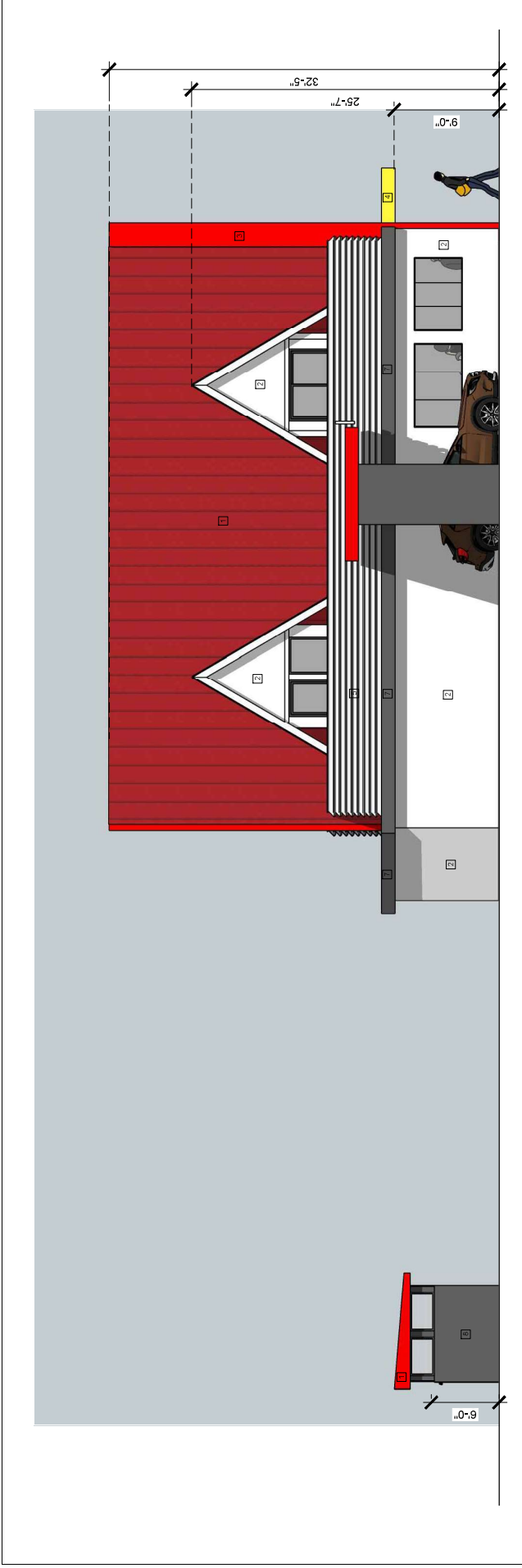
Architect: **MCNAUGHTON ARCHITECTURE, INC.**  
 Owner: **NIKKO'S BURGERS - TONY'S LLC**  
 PO BOX 7763, REDLANDS, CA 92373  
 TONY.S2019@YAHOO.COM

Job Title: **NIKKO'S BURGERS**  
 Sheet Title: **EXTERIOR ELEVATIONS**

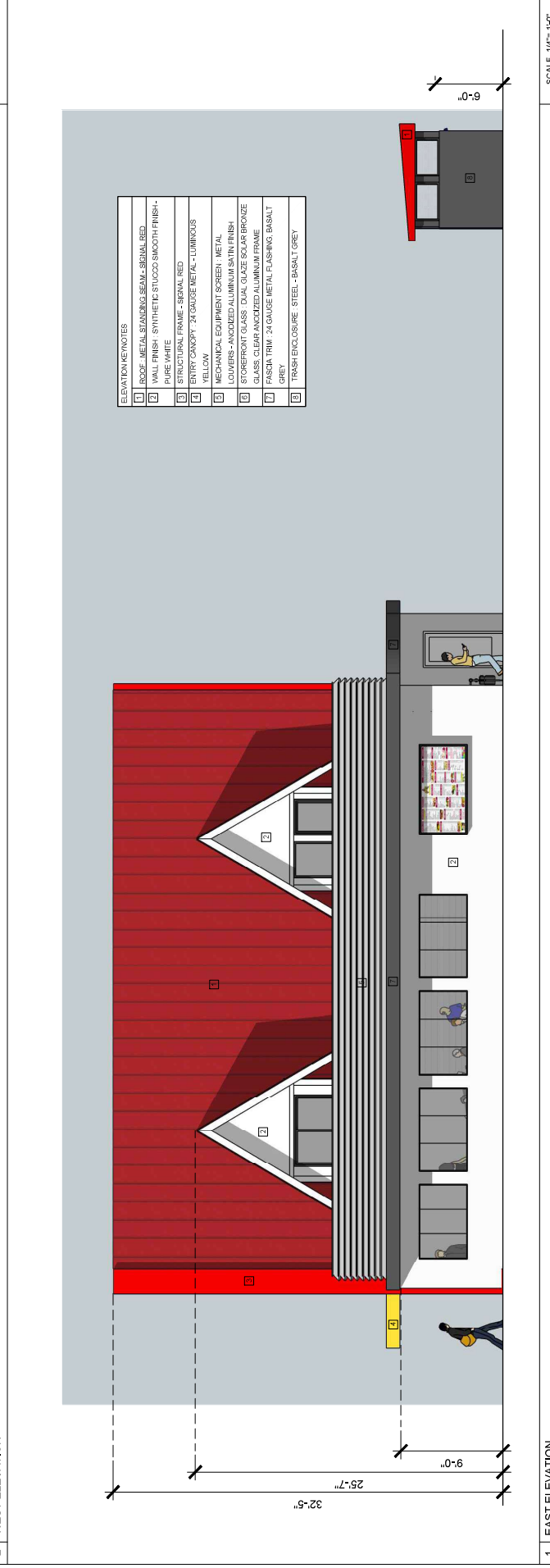
Revisions:


Scale: 1/4" = 1'-0"  
 Date: 09/24/21  
 Drawn By: **Thuy Nguyen, Lacharoneel, AIA**  
 Checked By: **Shaw McNaughton, AIA**  
 Sheet Number

**A-4.0**



2 | WEST ELEVATION SCALE 1/4" = 1'-0"



1 | EAST ELEVATION SCALE 1/4" = 1'-0"

ELEVATION NOTES

1	ROOF - METAL STANDING SEAM - SIGNAL RED
2	WALL FINISH - SYNTHETIC STUCCO SMOOTH FINISH - PURE WHITE
3	STRUCTURAL FRAME - SIGNAL RED
4	ENTRY CANOPY - 24 GAUGE METAL - LUMINOUS GLOW
5	EXTERIOR EQUIPMENT SCREEN - METAL LOGO - POLYURETHANE FINISH - SIGNAL RED
6	STREETFRONT GLASS - CLEAR GLAZE SOLAR BROUZE GLASS - CLEAR ANODIZED ALUMINUM FRAME
7	FASCIA TRIM - 24 GAUGE METAL FLASHING - BASALT GREY
8	TRASH ENCLOSURE - STEEL - BASALT GREY