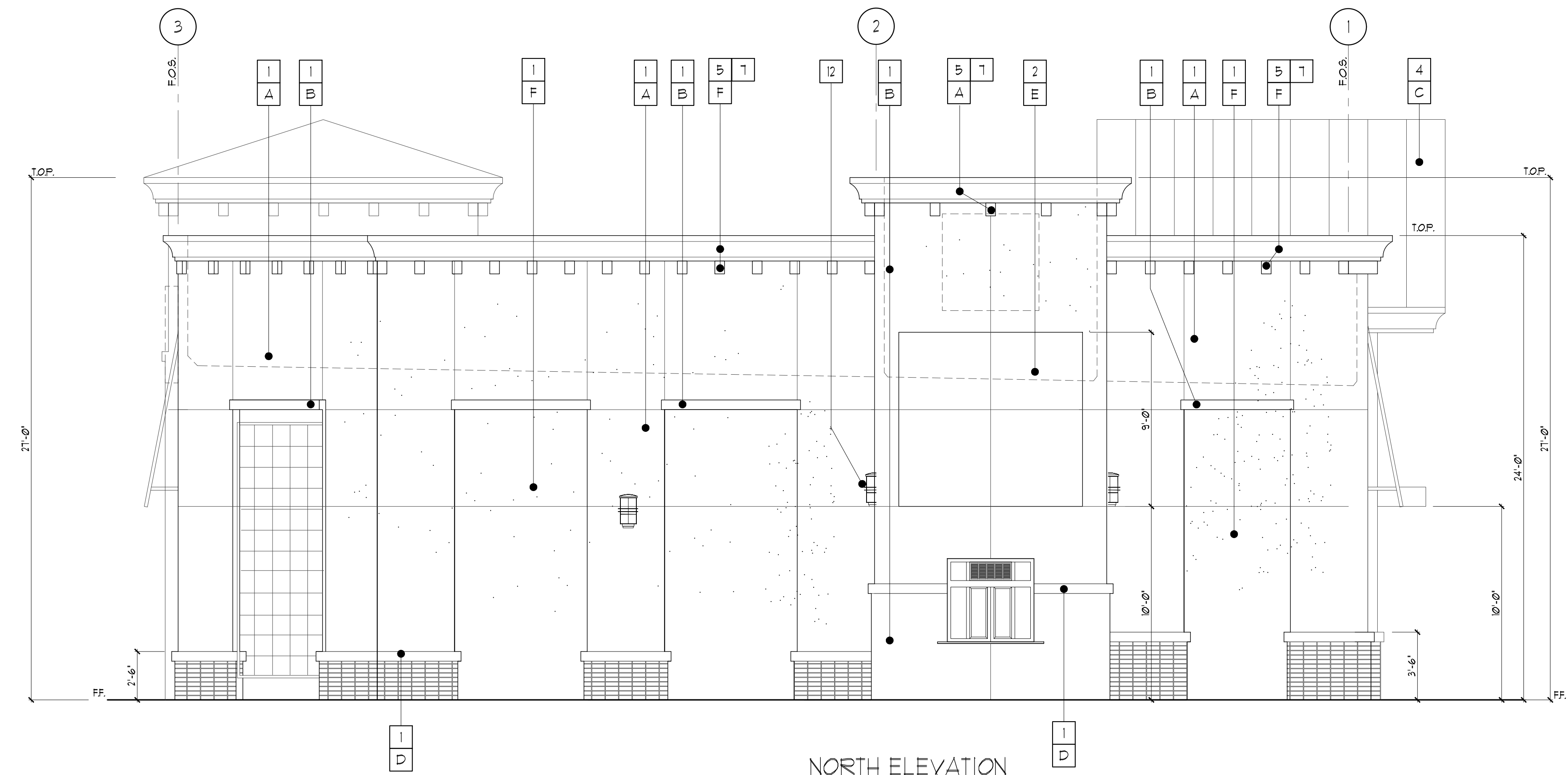


WEST ELEVATION
SCALE: 1/4" = 1'-0"



NORTH ELEVATION
SCALE: 1/4" = 1'-0"

NOTE:
PAD ELEVATION WILL FOLLOW DESIGN
DIRECTION AS SHOWN ON THESE
TYPICAL ELEVATIONS

MATERIAL LEGEND

- 1 PLASTER FINISH
- 2 FABRIC AWNINGS
- 3 ALUMINUM STOREFRONT
- 4 STANDING BEAM METAL ROOF
- 5 SHAPED CORNICE
- 6 GREEN SCREEN FOR FOLIAGE
- 7 FIBERGLASS CORBELS
- 8 BRICK, STACKED BOND
- 9 METAL AWNING
- 10 HARDY PLANK SIDING
- 11 CAPS OVER COLUMN BRICK VENEER AT FILASTERS
- 12 WALL MOUNTED DECOR. LIGHT FIXTURE
- 13 REQUIRED TEMPERED GLAZING "T"

FINISH LEGEND

- A SW 6002 'ESSENTIAL GRAY'
- B SW 9161 'POLISHED CONCRETE'
- C SW 7505 'MANOR HOUSE'
- D SW 6004 'TINK'
- E SW 7534 'OUTERBANKS'
- F SW 7004 'SNOUBOUND'
- G BROWN THINSET BRICK VENEER
- H DARK BRONZE ANODIZED
- I COLOR TO MATCH SW 6002 'ESSENTIAL GRAY'



3835 Birch Street
Newport Beach, CA 92660
(949) 756-8677

DATE: 09.30.2020
PROJECT NUMBER: 397.1803.01

TYPICAL PAD ELEVATIONS

NWC OF 210 & BASELINE ST.
HIGHLAND, CA 92346

DESIGN | ARCHITECTURE | PLANNING



3436 N. VERDUGO ROAD, SUITE 200, GLENDALE, CA 91208
P 818.957.7765 | www.red-arch.com