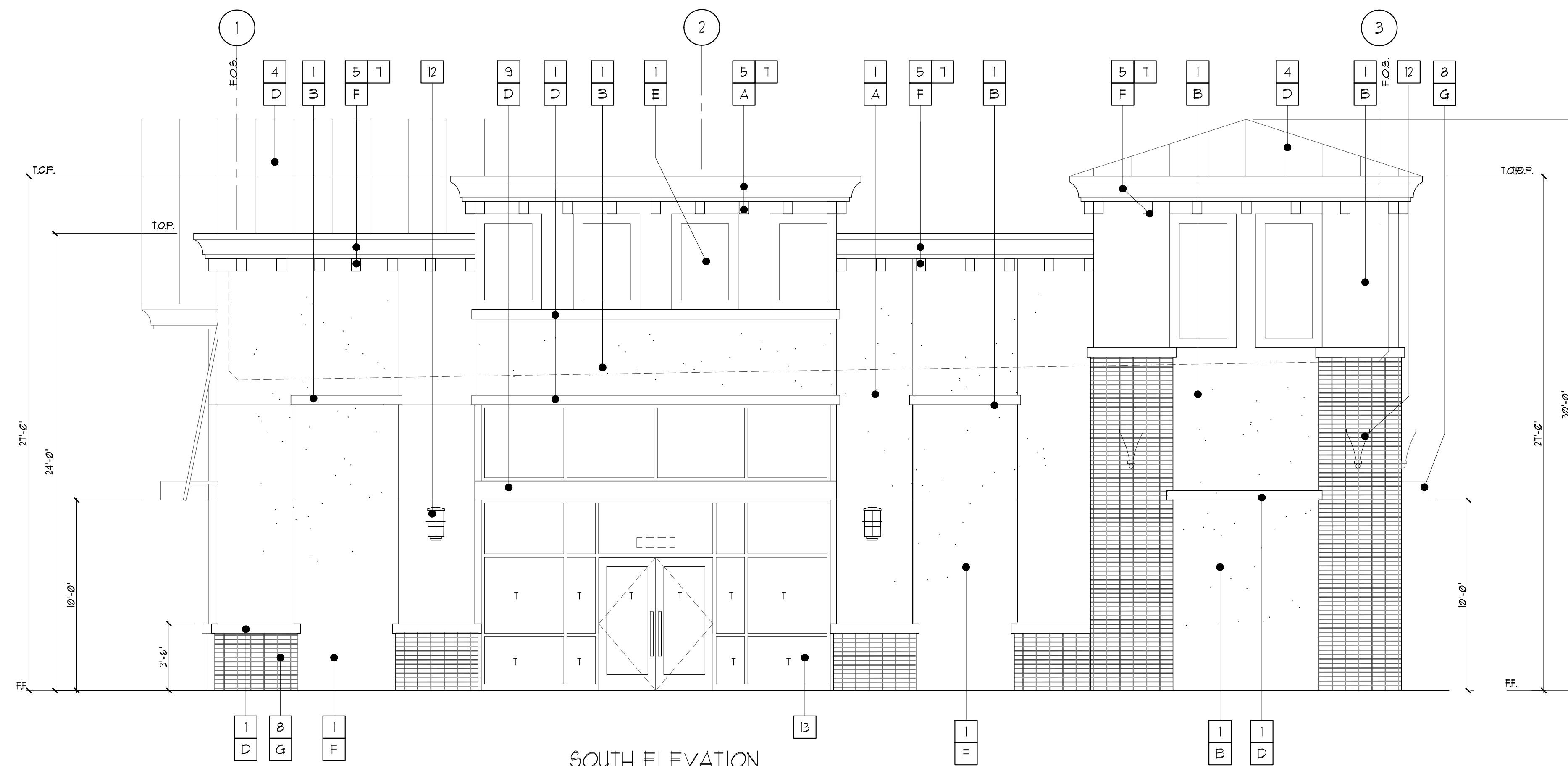


EAST ELEVATION
SCALE: 1/4" = 1'-0"



SOUTH ELEVATION

- MATERIAL LEGEND**
- 1 PLASTER FINISH
 - 2 FABRIC AWNING
 - 3 ALUMINUM STOREFRONT
 - 4 STANDING SEAM METAL ROOF
 - 5 SHAPED CORNICE
 - 6 GREEN SCREEN FOR FOLIAGE
 - 7 FIBERGLASS CORBELS
 - 8 BRICK, STACKED BOND
 - 9 METAL AWNING
 - 10 HARDY PLANK SIDING
 - 11 CAPS OVER COLUMN BRICK VENEER AT PILASTERS
 - 12 WALL MOUNTED DECOR. LIGHT FIXTURE
 - 13 REQUIRED TEMPERED GLAZING 'T'

- FINISH LEGEND**
- A SW 6002 'ESSENTIAL GRAY'
 - B SW 9167 'POLISHED CONCRETE'
 - C SW 1505 'MANOR HOUSE'
 - D SW 6004 'MINK'
 - E SW 1534 'OUTERBANKS'
 - F SW 1004 'SNOWBOUND'
 - G BROWN THINSET BRICK VENEER
 - H DARK BRONZE ANODIZED
 - I COLOR TO MATCH SW 6002 'ESSENTIAL GRAY'



3835 Birch Street
Newport Beach, CA 92660
(949) 756-8677

DESIGN | ARCHITECTURE | PLANNING



3436 N. VERDUGO ROAD, SUITE 200, GLENDALE, CA 91208
P 818.957.7765 | www.red-arch.com

TYPICAL PAD ELEVATIONS

**NWC OF 210 & BASELINE ST.
HIGHLAND, CA 92346**

DATE: 02.01.2021
PROJECT NUMBER: 397.1803.01